

# EU-TYPE EXAMINATION CERTIFICATE



The following model of Personal Protective Equipment has been subjected to an EU-type examination in accordance with the module B of the PPE regulation (2016/425) and has been shown to satisfy to essential health and safety requirements.

**Certificate N°** 0075/1016/161/03/21/0391 EXT 01/03/21

Issued by CTC, Notified Body N°0075, to the following model of personal protective equipment :

**Manufacturer :** Bossi Industrie  
Barail de la Morelle 24490 La Roche-Chalais  
France

## Description

**PPE Type :**

*a safety and personnel grounding, ESD control  
-footwear*

**Product reference :**

**SHADOW S3**

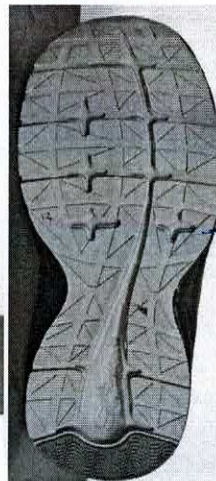
**Article code :**

**6182**

**Construction and material of outsole :**

**Cement, EVA+rubber**

**Pictures :**



<b>42 EUR</b>	REF: SHADOW S3	
<b>S.24</b>	Code: 6182 11/2020	
	C284-202007002KH2441	
<b>CE</b>	EN ISO 20345:2011 S3 WR HI CI HRO SRC EN 61340-5-1:2016 ESD control footwear	
<b>Manufacturer / Fabricant</b> BOSSI INDUSTRIE 24490 LA ROCHE CHALAIS - FRANCE Tel. +33(0)5 53 91 47 06		
		ID:1324
		<b>MADE IN CAMBODIA</b>

**Reference standard :** EN ISO 20345 : 2011 and EN 61340-5-1:2016

**Classification :** I

**Category :** S3 WR HI CI HRO SRC

**Size range :** 36-47

**Slip resistance :** SRC

**Toecap nature :** Non Metallic

**Insert nature :** Non Metallic

At the date of certificate the product is in compliance with Annex XVII of REACH regulation (n° 1907/2006 and revisions)

Full description of the PPE, reference rules verified in the context of the EU-type examination and information given on the product are detailed in the manufacturer's technical file index 01 dated from MARCH 2021

NOTA : Any modification to new items of the personal protective equipment object of this EU type approval certificate or any modification of the information contained in the manufacturer technical file which served for the deliverance of the EU type approval certificate (change of address, change of company status) should be brought to the attention of the notified body in accordance with Annex V §7.2 of Regulation 2016/425. Any marking on the PPE which is not concerned by the Regulation (UE) 2016/425, is not covered by this certificate.

**Issued in Lyon by**

**Date of first issue :** 05 March 2021

Didier GUISADO

**End of validity date :** 05 March 2026

Certification and Quality Manager



[www.ctcgroupe.com](http://www.ctcgroupe.com)

[cemarking@ctcgroupe.com](mailto:cemarking@ctcgroupe.com)

In application of the Regulation 2016/425 of the European parliament and the Council of 9th March 2016 related to Personal Protective Equipment and repealing the Directive 89/686/EEC.



Accreditation n° 5-0594  
Scope available on:  
[www.cofrac.fr](http://www.cofrac.fr)

CTC - 4, rue Hermann Frenkel - 69367 Lyon cedex 07 - France  
Tél. : +33 (0)4 72 76 10 10 - Fax : +33 (0)4 72 76 10 00 - [ctclyon@ctcgroupe.com](mailto:ctclyon@ctcgroupe.com)

Comité Professionnel de Développement Économique (CPDE) Cuir Chaussure Maroquinerie Ganterie  
Loi 78-654 du 22.06.1978 - Siret 77564972600160 - Code NAF 9412Z - TVA FR 88775649726

